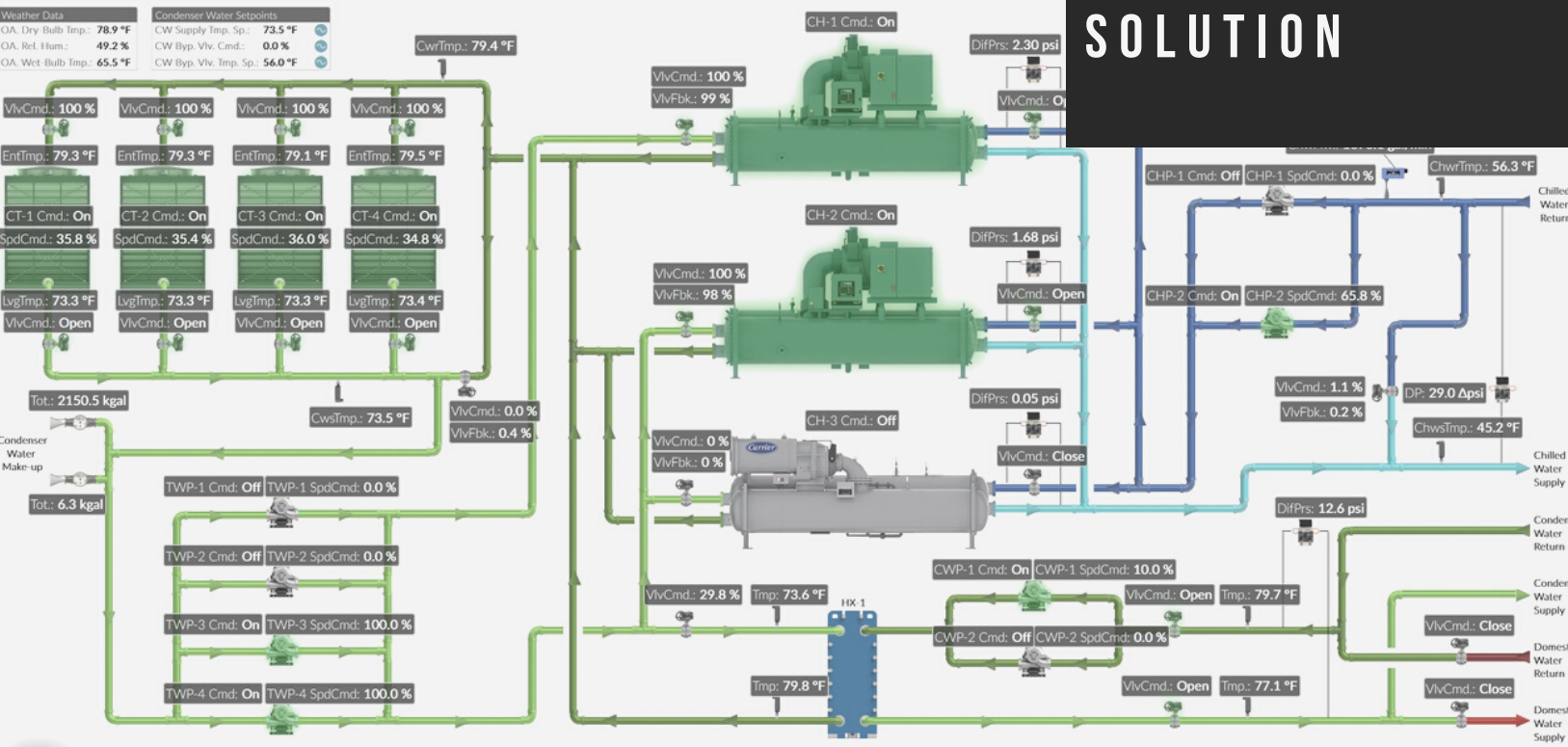




Hoffman

Building Technologies, Inc.

INTEGRATED HORTICULTURE CONTROLS SOLUTION



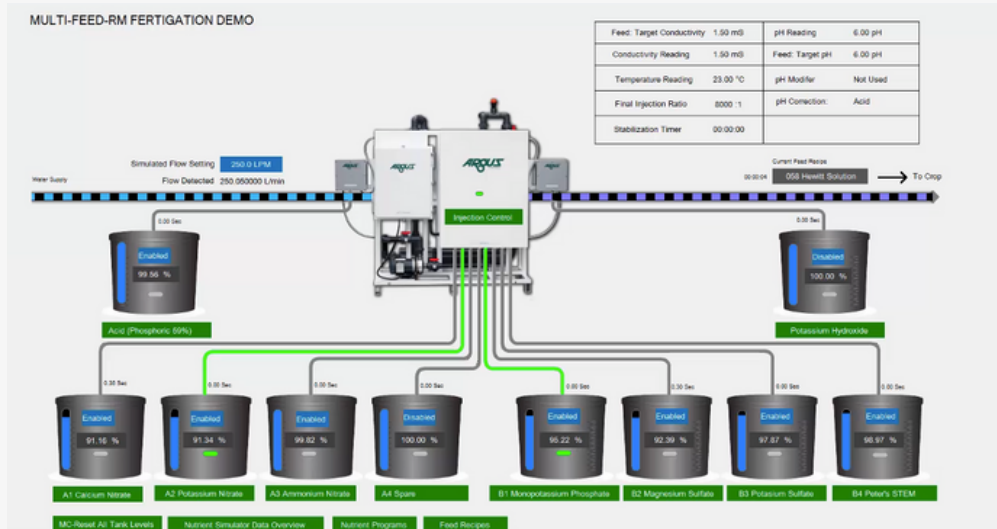
COMPLETE INTEGRATION OF ALL SYSTEMS

Including, but not limited to:

- HVAC
- Boiler and Chiller Systems
- Unit Heat
- Lighting
- Irrigation
- Nutrient Injection (Fertigation)
- Fans and Evaporative Cooling
- BMS Systems
- Controlled Outlets
- CO2 Enrichment

COMPLETE MONITORING AND REPORTING OF ALL EQUIPMENT AND ENVIRONMENTAL ZONES

- On-system graphing and review of historical data
- API export capability
- Alarms sent via email or text
- Offsite monitoring via Argus live
- Full auditing capability: who changed what and when



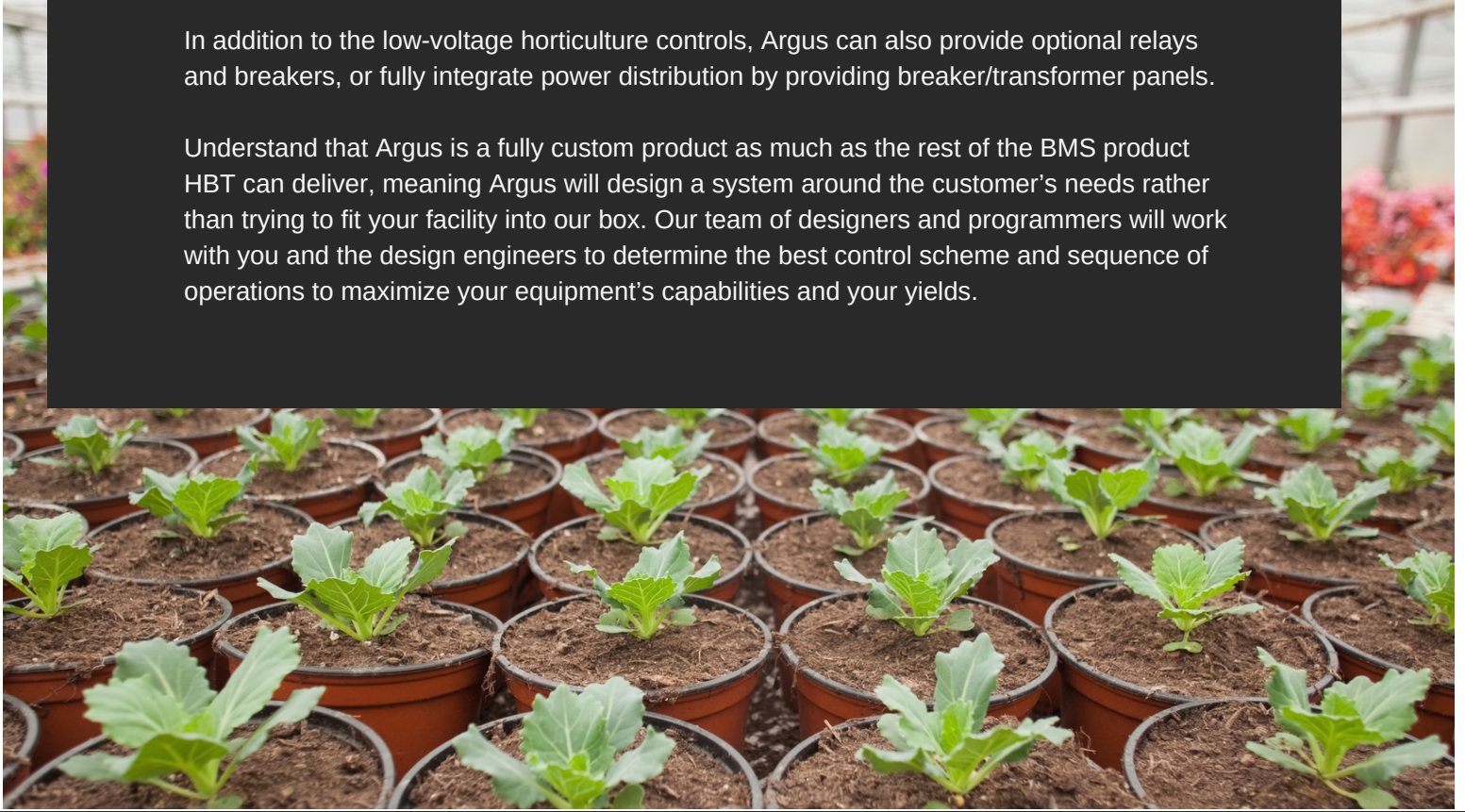
WHY CHOOSE US?

Hoffman Building Technologies has more than 35 years of experience in automation controls yielding the best possible outcomes for our customers around the globe.

Our manufacturing partner, Argus Controls, has provided robust automation solutions for growers of all kinds for over 35 years. Be it a greenhouse, outdoor, or fully controlled environmental facility, Argus can control and monitor the vast majority of systems that make your operations go.

In addition to the low-voltage horticulture controls, Argus can also provide optional relays and breakers, or fully integrate power distribution by providing breaker/transformer panels.

Understand that Argus is a fully custom product as much as the rest of the BMS product HBT can deliver, meaning Argus will design a system around the customer's needs rather than trying to fit your facility into our box. Our team of designers and programmers will work with you and the design engineers to determine the best control scheme and sequence of operations to maximize your equipment's capabilities and your yields.



ARGUS TITAN

Dashboard Data:

Zone	Temperature	Humidity	CO2	Light
ZONE 1	71.0 °F	67.0 %	340 ppm	14.00 μmol
ZONE 2	71.0 °F	67.0 %	340 ppm	14.00 μmol
ZONE 3	71.0 °F	67.0 %	340 ppm	14.00 μmol
ZONE 4	71.0 °F	67.0 %	340 ppm	14.00 μmol
ZONE 5	71.0 °F	67.0 %	340 ppm	14.00 μmol
ZONE 6	71.0 °F	67.0 %	340 ppm	14.00 μmol
ZONE 7	71.0 °F	67.0 %	340 ppm	14.00 μmol
ZONE 8	71.0 °F	67.0 %	340 ppm	14.00 μmol

System Overview:

- Outdoor Temperature: 68.0 °F
- Wind Direction: East
- Wind Speed: 10 mph
- Peak Wind Speed: 10 mph
- Wind Speed (Prev): 4.709 mph

Current Weather:

- Outdoor Temperature: 68.0 °F
- Humidity: 67.0 %
- Wind Speed: 10 mph
- Wind Direction: East
- Outdoor Light: 100 μmol
- Relative Humidity: 67.0 %
- Home Status: Not Streaming
- API Status: Pending

Energy Management:

- Energy Management: 30.0 %
- Peak Power: 100.00

System Settings:

- System: OMA and Regional Settings
- Programs: Group Alarm Status: Silent
- Thursday May 26, 2015 12:09:40

Flood Floor Management Diagram:

This is a self-running demo depicting flood floor management. The group includes a complete irrigation system that is generating the system activity on a 90 second cycle. The next floor is allowed to begin flooding once enough water has drained from the previous floor. The cycle repeats every 90 seconds.

Current Cycle: 32

Diagram components: Storage Tank, Main Pump, Supply Line, Floor 1 (Draining), Floor 2 (Flooding), Floor 3 (Inactive), Drain Line, Sump Pump, Return Line.



HOFFMAN BUILDING TECHNOLOGIES, INC.
HBTECH.COM